

CERTIFICATE OF LOCATION OF GOVERNMENT CORNER

EAST QUARTER Corner of Section 28, Township 108N, Range 39W

5th Principal Meridian, State of Minnesota, County of MURRAY

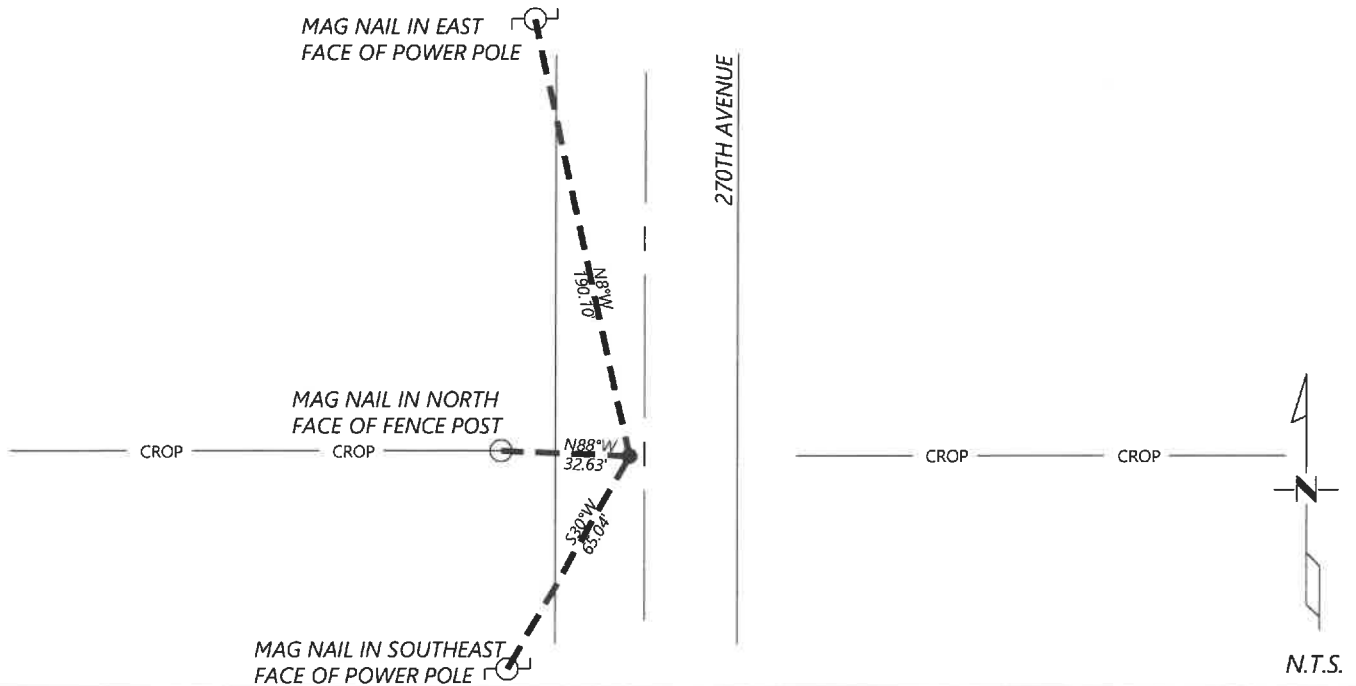
At the corner location shown on the sketch:

On 11/04/2020 found a 10X10IN STONE FIRMLY PLANTED WITH BOLT AND WOOD REMNANTS, DOWN 2.5FT.
DATE

left monument as found lowered monument removed monument (explain)

On 12/16/2020 placed a NO. 4 REBAR WITH CAP LS 45874 ABOVE STONE, DOWN 0.4FT BELOW GRADE.
DATE

SKETCH OF REFERENCE TIES



Statement of evidence for this corner location is on back of this page.

I hereby certify that this document was researched and prepared by me or under my direct supervision and that I am a licensed Land Surveyor under the laws of the State of Minnesota.

Signature [Handwritten Signature]

Date 6/17/2021 License No. 45874

Title:

- Land Surveyor Professional Engineer
- County Surveyor County Engineer

OFFICE OF THE COUNTY RECORDER

County of Murray

I hereby certify that this document was filed in the Co.

Recorder's office at _____ M. on the _____ day of _____ A.D. 20

County Recorder [Handwritten Signature: Karen Brown]

by JUN 22 2021, Deputy

DOCUMENT NO. _____

JASON LATZKE
Minnesota License No. 45874

Statement of Evidence:

East Quarter Corner of Section 28, Township 108 North, Range 39 West, 5th Principal Meridian, Murray County, Minnesota.

1861 July, GLO Notes: Set post in mound.

Undated, Survey record for Section 28 does not describe what was found or set at the corner, but it does show it at a midpoint distance, 2646.0ft to the Northeast and Southeast corners.

2020 December, Westwood Professional Services excavated with a backhoe and found a 10x10in firmly planted stone with remnants of wood and a bolt next to it, 2.5ft below grade. I accepted the location of the stone and set a $\frac{1}{2}$ " rebar and cap LS45874 above it.

Analysis of the recovered data, field evidence and survey measurements, indicates that the monument found is the correct perpetuation of this corner. For additional information concerning this corner please contact Westwood Professional Services.